

Peach Cliff Estates, 4505 McLean Creek Rd., OK Falls. It is found by turning left on 10th Ave. after the big intersection, then following 10th Ave. around the right hand curve onto McLean Creek Rd. On the second major curve you will see the entrance to Peach Cliff Estates on the right.

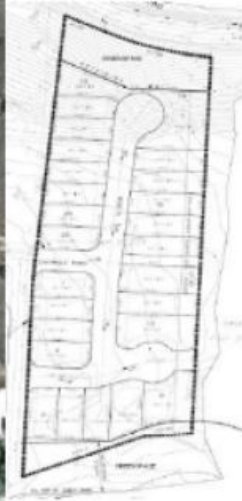
This park currently has 162 units in it. There is a new section being developed to the east of the existing park. It will eventually contain 26 more units. Units G1, G5, G9 and G18 in that section have already been sold and have buildings on them. The new section is included in the current total of units. This new section will have metered water from the town and will not be on the existing wells.

This park currently has no Park Reps for the P&DMHOA. The Association Newsletter is not currently delivered in the spring and fall, usually April and October in this park.

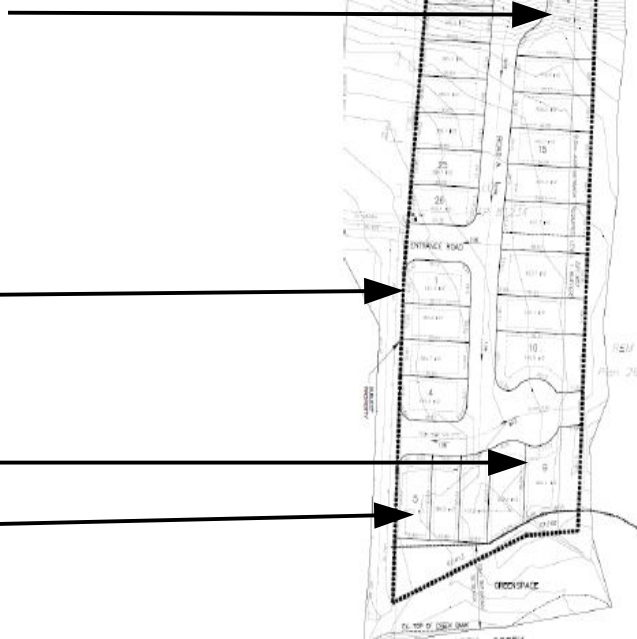
Peach Cliff Estates is a 55+ park. It is owned by Retire West Communities Ltd. The on-site managers are Terry and Beverly Clark. The Office phone number is 250-497-5577.

The park has two wells but only one is used in the winter. The sewer service is through the town system. RDOS does the garbage, recycling and appliance, metal and wood pick-up, so that service has been removed from the monthly pad rent.





Pad G18 has a unit still under construction.



Pad G1 has a unit on it now.

Pad G9 now has a unit on it.

Pad G5 now has a unit on it.