



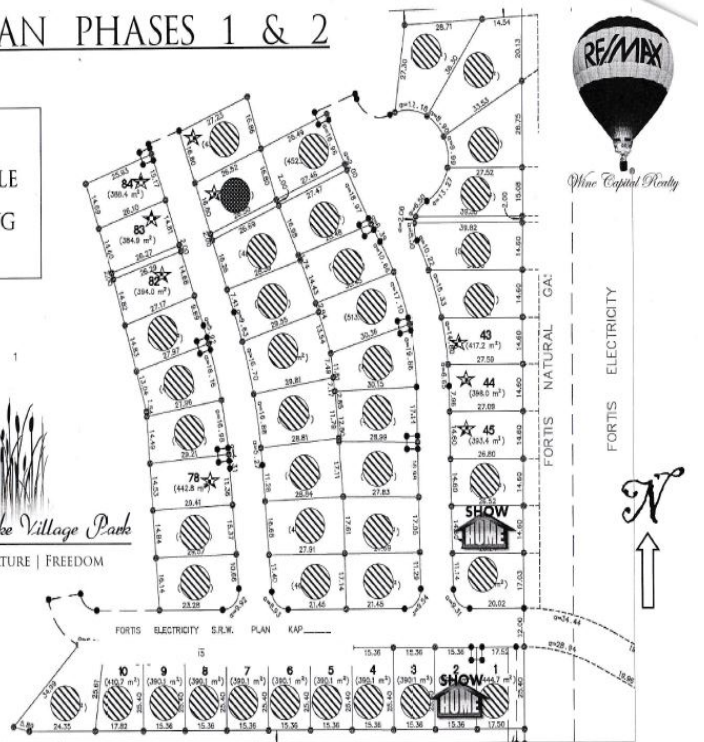
Gallagher Lake Village Park MHP, 8300 Gallagher Lake Frontage Rd. across Hwy 97 from Gallagher Lake Rd., **Oliver**. This park is also across the highway from Country Pines and Cottonwood MHP's. The park is being developed in 5 phases and will eventually have over a 100 sites. As far as I know it has no age restrictions and very open pet policy. The site map will be changing as more sites are sold.

SITE PLAN PHASES 1 & 2

 SOLD
 AVAILABLE
 PENDING


Gallagher Lake Village Park
 LIFESTYLE | NATURE | FREEDOM

*AS OF August 2014



This is a recent view of its location as seen from Google Earth showing some homes in place.



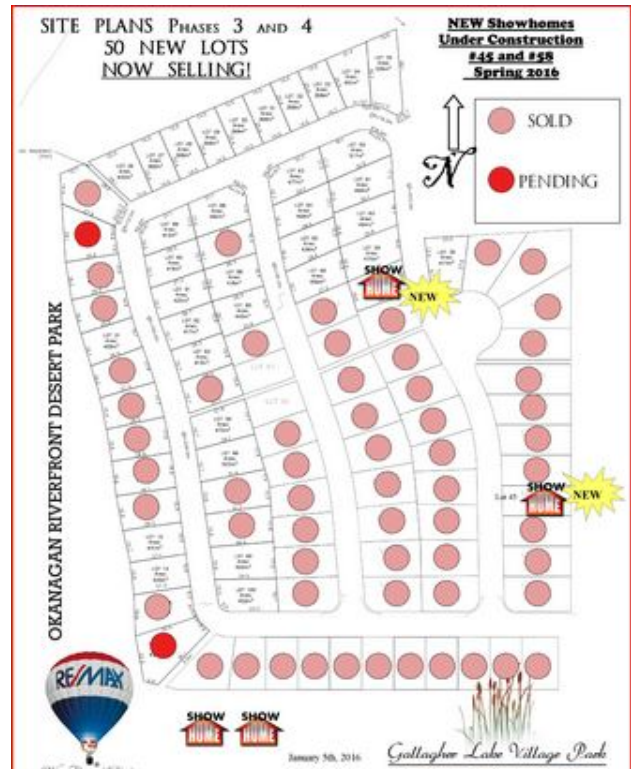
This is a recent map showing the layout of phases 3 and 4 and 4.

It also shows what has been sold in phases 1 and 2.

This park has a Park Rep at Unit#78.

The Association (P&DMHOA) Newsletter is delivered in the spring and fall, usually April and October.

Phase 5 is now in development.



This is what phase 5 currently looks like.

